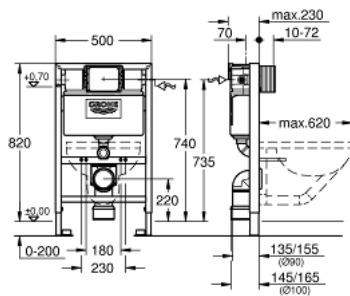


38 959 000 **SOLIDO 配件,2-IN-1,0.82M**

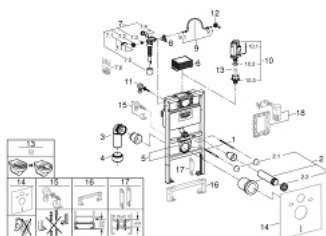


产品描述

- 附6/9升水箱
- 包含：
- 座厕用Rapid SL元件（38 526 000）
- 2个挂墙式托板带固定材料



38 959 000 **SOLIDO 配件,2-IN-1,0.82M**



备件, 十一月 2021 – now

- 1: 螺栓 (Order-nr. 4276400M)
- 2: 连接管 (Order-nr. 37311K00)
- 2.1: Basin fastening (Order-nr. 43511SH0)
- 2.2: 连接器 (Order-nr. 37119000)
- 3: PP-outlet bend Ø 90 mm (Order-nr. 42327000)
- 4: Reducer (Order-nr. 42242000)
- 5: Support for outlet bend (Order-nr. 42243000)
- 6: Inspection shaft for flushing cistern (Order-nr. 42326000)
- 7: 充水阀 (Order-nr. 37095000)
- 7.1: 把手 (Order-nr. 43734000)
- 7.1.1: 紧固件 (Order-nr. 4377000M)
- 7.2: Valve head (Order-nr. 43536000)
- 7.3: 膜 (Order-nr. 4375800M)
- 7.4: 螺帽 (Order-nr. 43735000)
- 7.5: Valve FLOAT, 5 pcs. (Order-nr. 4379100M)
- 7.6: 密封配套 (Order-nr. 43722000)*
- 8: Support device (Order-nr. 42195000)
- 9: Overflow Sleeve (Order-nr. 43325000)
- 9.1: Sealing washer (Order-nr. 0319100M)
- 10: Discharge valve AV1 complete (Order-nr. 42314000)
- 10.1: Pneumatic hose (Order-nr. 42319000)
- 10.2: 紧固件 (Order-nr. 42310000)
- 10.3: Valve seat for GD2 (Order-nr. 42315000)
- 11: 配件,1.13m (Order-nr. 3855800M)
- 12: Water connection (Order-nr. 48561000)
- 13: Flow restrictor (Order-nr. 42300000)*
- 14: 防噪配套 (Order-nr. 37131000)*
- 15: Xtra wall brackets, flexible placing (Order-nr. 38733000)*
- 16: 延长件 (Order-nr. 38629000)*
- 17: 配件 (Order-nr. 38779000)*
- 18: AV1卸流阀 (Order-nr. 38796000)*

* Optional accessories