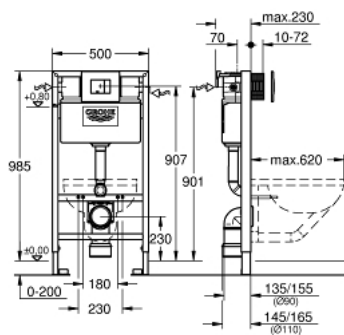


## 38 888 000 **RAPID SL** 座厕四件套，安装高度为1.00米

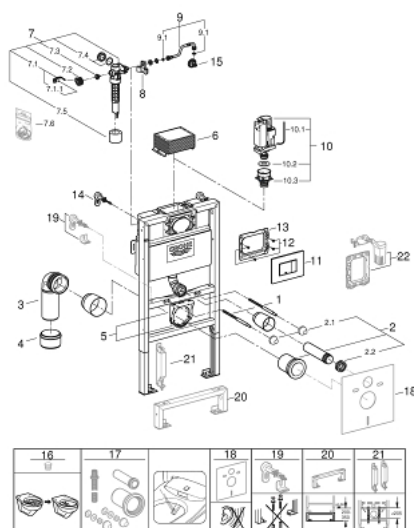


### 产品描述

- Colour: 镀铬
- 附6/9升水箱
- 包含：
- 用于座厕的Rapid SL元件 (38 525 001)
- 斯科特都市型镀铬冲水面板 (38 732 000)
- 高仪Fresh改装套件 (38 796 000)
- 安装支撑件 (38 558 00M)



## 38 888 000 RAPID SL 座厕四件套，安装高度为1.00米



备件, 九月 2021 – now

- 1: 螺栓 (Order-nr. 4276400M)
- 2: 连接管 (Order-nr. 37311K00)
- 2.1: Basin fastening (Order-nr. 43511SH0)
- 2.2: 连接器 (Order-nr. 37119000)
- 3: PP-outlet bend Ø 90 mm (Order-nr. 42327000)
- 4: Reducer (Order-nr. 42242000)
- 5: Support for outlet bend (Order-nr. 42243000)
- 6: Inspection shaft for flushing cistern (Order-nr. 42326000)
- 7: 充水阀 (Order-nr. 37095000)
- 7.1: 把手 (Order-nr. 43734000)
- 7.1.1: 紧固件 (Order-nr. 4377000M)
- 7.2: Valve head (Order-nr. 43536000)
- 7.3: 膜 (Order-nr. 4375800M)
- 7.4: 螺帽 (Order-nr. 43735000)
- 7.5: Valve FLOAT, 5 pcs. (Order-nr. 4379100M)
- 7.6: 密封配套 (Order-nr. 43722000)\*
- 8: Support device (Order-nr. 42195000)
- 9: Overflow Sleeve (Order-nr. 43325000)
- 9.1: Sealing washer (Order-nr. 0319100M)
- 10: Discharge valve AV1 complete (Order-nr. 42314000)
- 10.1: Pneumatic hose (Order-nr. 42319000)
- 10.2: 紧固件 (Order-nr. 42310000)
- 10.3: Valve seat for GD2 (Order-nr. 42315000)
- 11: Top plate with push button (Order-nr. 42371000)
- 12: 螺丝  
(Order-nr. 6636200M)
- 13: 托板框架 (Order-nr. 43207000)
- 14: 配件, 1.13m (Order-nr. 3855800M)
- 15: Water connection (Order-nr. 48561000)
- 16: Flow restrictor (Order-nr. 42300000)\*
- 17: Retrofit kit for shower toilets Sensia Arena and IGS (Order-nr. 40899000)\*
- 18: 防噪配套 (Order-nr. 37131000)\*
- 19: Xtra wall brackets, flexible placing (Order-nr. 38733000)\*
- 20: 延长件 (Order-nr. 38629000)\*
- 21: 配件 (Order-nr. 38779000)\*
- 22: AV1卸流阀 (Order-nr. 38796000)\*