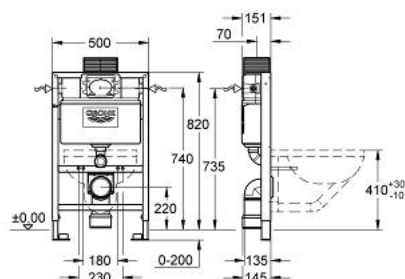


## 38 828 000 马桶用RAPID SL



### 产品描述

- 附6/9升水箱
- 挂墙用
- 安装高度为0.82米
- 粉末喷涂处理钢架，自立式
- 用于干包层，完整预装
- 附固定连接
- 可锁定式快速调节
- 安装物料
- TÜV认证
- 2个马桶固定螺栓
- 陶瓷件紧固设备
- 固定螺栓长度180/230毫米
- 出水弯管直径80毫米
- 深度可调
- 减压器,直径80/100毫米
- 进水出水连接配套
- 6/9升水箱
- adjustment ex factory 4.5 l
- 气动冲水阀:双冲,单冲(中断冲水)及不可中断冲水
- 前按式或顶按式
- 左/右/后进水
- 低噪音(获德国噪音认证)
- 防冷凝
- flexible connecting hose Ø 3/8"
- 可伸缩检查杆包含 施工防护装置
- 无挂墙配件
- 无传动面板
- 高仪乐可节技术减少耗水量

## 38 828 000 马桶用RAPID SL

备件, 六月 2012 – now

- 1: 螺栓 (Order-nr. 4276400M)
- 2: 连接管 (Order-nr. 37311K00)
  - 2.1: Basin fastening (Order-nr. 43511SH0)
  - 2.2: 连接器 (Order-nr. 37119000)
- 3: PP-outlet bend Ø 90 mm (Order-nr. 42327000)
- 4: Reducer (Order-nr. 42242000)
- 5: Support for outlet bend (Order-nr. 42243000)
- 6: Inspection shaft for flushing cistern (Order-nr. 42326000)
- 7: 充水阀 (Order-nr. 37095000)
  - 7.1: 把手 (Order-nr. 43734000)
    - 7.1.1: 紧固件 (Order-nr. 4377000M)
    - 7.2: Valve head (Order-nr. 43536000)
  - 7.3: 膜 (Order-nr. 4375800M)
  - 7.4: 螺帽 (Order-nr. 43735000)
  - 7.5: Valve FLOAT, 5 pcs. (Order-nr. 4379100M)
  - 7.6: 密封配套 (Order-nr. 43722000)\*
- 8: Support device (Order-nr. 42195000)
- 9: 软管 (Order-nr. 42206000)
- 10: Discharge valve AV1 complete (Order-nr. 42314000)
  - 10.1: Pneumatic hose (Order-nr. 42319000)
  - 10.2: 紧固件 (Order-nr. 42310000)
  - 10.3: Valve seat for GD2 (Order-nr. 42315000)
- 11: 配件, 1.13m (Order-nr. 3855800M)\*
- 12: AV1卸流阀 (Order-nr. 38796000)\*
- 13: 防噪配套 (Order-nr. 37131000)\*

\* Optional accessories

No exploded view is available for this spare part list.