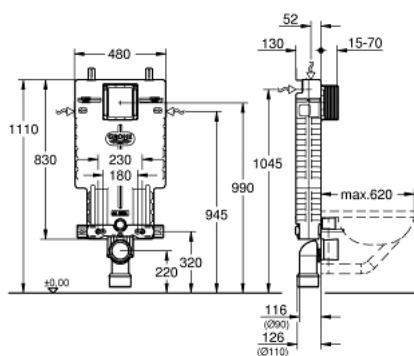


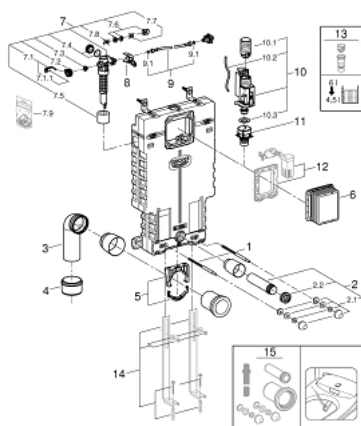
38 780 001 座厕用RENOBLOCK



产品描述

- GD2水箱
- 砌体结构用EPS 隔音模块
- 830 x 470 x 130毫米
- 用于模块化固定的轨道适配器
- 墙面导轨带单独安装固定配件
- 2个马桶固定螺栓
- 固定螺栓长度180/230毫米
- 陶瓷件紧固设备
- 出水弯管 90毫米
- 深度可调
- 减径管 90/110毫米
- 进水出水连接配套
- 6/9升GD2水箱
- 出厂调整水量为6升和3升
- 气动冲水阀:双冲,单冲(中断冲水)及不可中断冲水
- 左/右/上/后进水
- 低噪音(获德国噪音认证)
- 防冷凝
- 1/2" 供水连接包括综合角阀和推入配合灵活软管接头
- 安装检查无需使用工具, 包含施工过程中使用的防护装置
- 垂直或水平使用

38 780 001 座厕用RENOBLOCK



备件, 十月 2017 – now

- 1: 螺栓 (Order-nr. 4276400M)
- 2: 连接管 (Order-nr. 37311K00)
 - 2.1: Basin fastening (Order-nr. 43511SH0)
 - 2.2: 连接器 (Order-nr. 37119000)
- 3: PP-outlet bend Ø 90 mm (Order-nr. 42327000)
- 4: Reducer (Order-nr. 42242000)
- 5: Support for outlet bend (Order-nr. 42243000)
- 6: 检查轴 (Order-nr. 66783000)
- 7: 充水阀 (Order-nr. 37095000)
 - 7.1: 把手 (Order-nr. 43734000)
 - 7.1.1: 紧固件 (Order-nr. 4377000M)
 - 7.2: Valve head (Order-nr. 43536000)
 - 7.3: 膜 (Order-nr. 4375800M)
 - 7.4: 螺帽 (Order-nr. 43735000)
 - 7.5: Valve FLOAT, 5 pcs. (Order-nr. 4379100M)
 - 7.6: 密封配套 (Order-nr. 43722000)*
- 8: Support device (Order-nr. 42246000)
- 9: 软管 (Order-nr. 42233000)
 - 9.1: Sealing washer (Order-nr. 0319100M)
- 10: 双重开关阀AV1 (Order-nr. 42320000)
 - 10.1: extension for Overflow pipe (Order-nr. 42313000)
 - 10.2: Pneumatic hose (Order-nr. 42319000)
 - 10.3: 紧固件 (Order-nr. 42310000)
- 11: Valve seat for GD2 (Order-nr. 42315000)
- 12: AV1卸流阀 (Order-nr. 38796000)*
- 13: 4.5 l adapter for GD2 (Order-nr. 42333000)*
- 14: 支撑脚 (Order-nr. 37304000)*
- 15: Retrofit kit for shower toilets Sensia Arena and IGS (Order-nr. 40899000)*

* Optional accessories