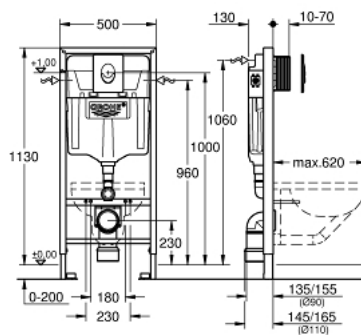


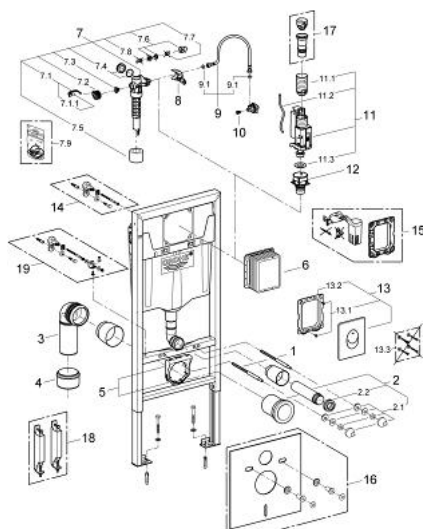
## 38 764 001 **RAPID SL** 座厕两件套，安装高度为1.13米

### 产品描述

- Colour: 阿尔卑斯白
- GD2水箱
- 包含:
- 座厕用Rapid SL元件 (38 528 001)
- 斯科特气动冲水面板，阿尔卑斯白，立式安装 (38 505 SH0)



## 38 764 001 RAPID SL &#160;座厕两件套，安装高度为1.13米



备件, 三月 2013 – now

- 1: 螺栓 (Order-nr. 4276400M)
- 2: 连接管 (Order-nr. 37311K00)
- 2.1: Basin fastening (Order-nr. 43511SH0)
- 2.2: 连接器 (Order-nr. 37119000)
- 3: PP-outlet bend Ø 90 mm (Order-nr. 42327000)
- 4: Reducer (Order-nr. 42242000)
- 5: Support for outlet bend (Order-nr. 42243000)
- 6: 检查轴 (Order-nr. 66791000)
- 7: 充水阀 (Order-nr. 37095000)
- 7.1: 把手 (Order-nr. 43734000)
- 7.1.1: 紧固件 (Order-nr. 4377000M)
- 7.2: Valve head (Order-nr. 43536000)
- 7.3: 膜 (Order-nr. 4375800M)
- 7.4: 螺帽 (Order-nr. 43735000)
- 7.5: Valve FLOAT, 5 pcs. (Order-nr. 4379100M)
- 7.6: 密封配套 (Order-nr. 43722000)\*
- 8: Support device (Order-nr. 42246000)
- 9: 软管 (Order-nr. 42233000)
- 9.1: Sealing washer (Order-nr. 0319100M)
- 10: 阀芯 (Order-nr. 42385000)
- 11: 双重开关阀AV1 (Order-nr. 42320000)
- 11.1: extension for Overflow pipe (Order-nr. 42313000)
- 11.2: Pneumatic hose (Order-nr. 42319000)
- 11.3: 紧固件 (Order-nr. 42310000)
- 12: Valve seat for GD2 (Order-nr. 42315000)
- 13: 冲水面板 (Order-nr. 38505SH0)
- 13.1: 螺丝 (Order-nr. 6636200M)
- 13.2: 托板框架 (Order-nr. 43207000)
- 13.3: 配件套组 (Order-nr. 4308500M)\*
- 13.4: 配件套组 (Order-nr. 4215800M)\*
- 14: 配件, 1.13m (Order-nr. 3855800M)\*
- 15: AV1卸流阀 (Order-nr. 38796000)\*
- 16: 防噪配套 (Order-nr. 37131000)\*
- 17: 4.5 l adapter for GD2 (Order-nr. 42333000)\*
- 18: 配件 (Order-nr. 38779000)\*