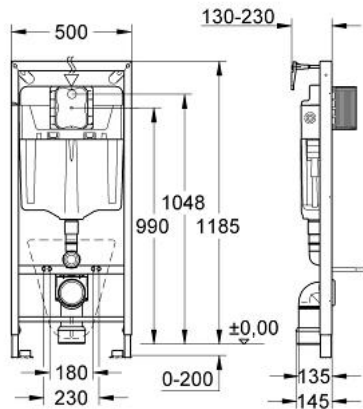


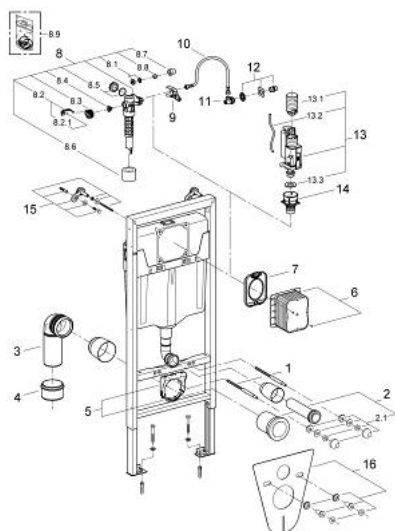
38 539 000 马桶用RAPID SL



产品描述

- Colour: 镀铬
- 6/9升GD2水箱
- 安装高度为1.2米
- 挂墙用
- 粉末喷涂处理钢架，自立式
- 用于干包层，完整预装
- 附固定连接
- 可锁定式快速调节
- 安装物料
- TÜV认证
- 2个马桶固定螺栓
- 陶瓷件紧固设备
- 固定螺栓长度180/230毫米
- 深度可调
- 出水弯管直径80毫米
- 减压器,直径80/100毫米
- 进水出水连接配套
- 气动冲水阀:双冲,单冲(中断冲水)及不可中断冲水
- 左/右/上/后进水
- 低噪音(获德国噪音认证)
- 防冷凝
- 1/2" 供水连接包括综合角阀和推入配合灵活软管接头
- shortable inspection shaft incl. protection during construction phase, for vertical or horizontal use
- 无传动面板
- 高仪乐可节技术减少耗水量
- 墙面安装配件

38 539 000 马桶用RAPID SL



备件, 四月 2008 – now

- 1: 螺栓 (Order-nr. 4276400M)
- 2: 连接管 (Order-nr. 37311K00)
- 2.1: Basin fastening (Order-nr. 43511SH0)
- 2.2: 连接器 (Order-nr. 37119000)
- 3: PP-outlet bend Ø 90 mm (Order-nr. 42327000)
- 4: Reducer (Order-nr. 42242000)
- 5: Support for outlet bend (Order-nr. 42243000)
- 6: Inspection shaft for GD2 in Rapid SL (Order-nr. 42324000)
- 7: 保护面板
(Order-nr. 42231000)
- 8: 充水阀 (Order-nr. 37095000)
- 8.1: 把手 (Order-nr. 43734000)
- 8.1.1: 紧固件 (Order-nr. 4377000M)
- 8.2: Valve head (Order-nr. 43536000)
- 8.3: 膜 (Order-nr. 4375800M)
- 8.4: 螺帽 (Order-nr. 43735000)
- 8.5: Valve FLOAT, 5 pcs. (Order-nr. 4379100M)
- 8.6: 密封配套 (Order-nr. 43722000)*
- 9: Support device (Order-nr. 42246000)
- 10: 软管 (Order-nr. 42233000)
- 10.1: Sealing washer (Order-nr. 0319100M)
- 11: 角阀 (Order-nr. 42235000)
- 12: 进水管 (Order-nr. 42234000)
- 13: 双重开关阀AV1 (Order-nr. 42320000)
- 13.1: extension for Overflow pipe (Order-nr. 42313000)
- 13.2: Pneumatic hose (Order-nr. 42319000)
- 13.3: 紧固件 (Order-nr. 42310000)
- 14: Valve seat for GD2 (Order-nr. 42315000)
- 15: 配件, 1.13m (Order-nr. 3855800M)
- 16: 防噪配套 (Order-nr. 37131000)

* Optional accessories