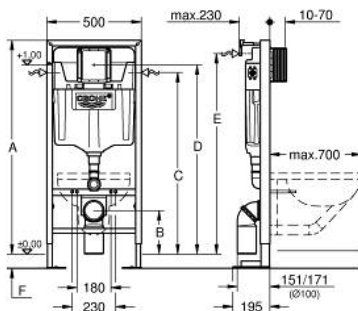


38 340 001 RAPID SL 座厕元件，安装高度为1.13米

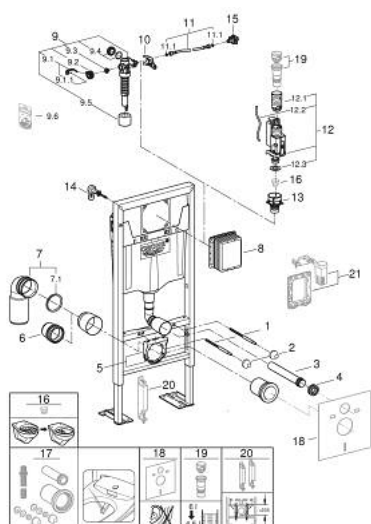


A	1130	1180
B	230	280
C	960	1010
D	1000	1050
E	1060	1110
F	0-200	0-150

产品描述

- GD2水箱
- 用于独立式安装， 墙面安装 或立柱墙安装
- 粉末喷涂处理钢架， 自立式
- 用于干包层， 完整预装
- suitable for installation of 70 cm toilets
- 附固定连接
- 可封闭式
- 安装物料
- 2个马桶固定螺栓
- 陶瓷件紧固设备
- 固定螺栓长度180/230毫米
- 90° rotatable PVC outlet bend 100 mm
- 隔板 直径80毫米
- 进水出水连接配套
- 冲水箱GD 2, 6 - 9 l, 具有以下特点:
- 出厂调整水量为6升和3升
- 气动冲水阀:双冲,单冲(中断冲水)及不可中断冲水
- 左/右/后进水
- 低噪音(获德国噪音认证)
- 防冷凝
- 1/2" 供水连接包括综合 角阀和推入配合灵活软管接头
- 安装检查无需使用工具, 包含施工过程中使用的防护装置
- 垂直或水平使用
- 含安装支撑件38 558 00M, 用于水箱固定安装
- 如需安装小号冲水面板, 请订购 改造款轴 40 911 000 (单独销售)
- for easy flow regulation via inspection shaft without removing the valves please order flow manager 42 593 000 (sold separately)

38 340 001 **RAPID SL** 座厕元件，安装高度为1.13米



备件, 十一月 2021 – now

- 1: 螺栓 (Order-nr. 4276400M)
- 2: Basin fastening (Order-nr. 43511SH0)
- 3: 墙出水接口 (Order-nr. 43352000)
- 4: 连接器 (Order-nr. 37119000)
- 5: Support for outlet bend (Order-nr. 42243000)
- 6: 加长管 (Order-nr. 42766000)
- 7: PVC waste bend (Order-nr. 42216000)
- 7.1: Sealing washer (Order-nr. 4207700M)
- 8: 检查轴 (Order-nr. 66791000)
- 9: 充水阀 (Order-nr. 37095000)
- 9.1: 把手 (Order-nr. 43734000)
- 9.1.1: 紧固件 (Order-nr. 4377000M)
- 9.2: Valve head (Order-nr. 43536000)
- 9.3: 膜 (Order-nr. 4375800M)
- 9.4: 螺帽 (Order-nr. 43735000)
- 9.5: Valve FLOAT, 5 pcs. (Order-nr. 4379100M)
- 9.6: 密封配套 (Order-nr. 43722000)*
- 10: Support device (Order-nr. 42246000)
- 11: 软管 (Order-nr. 42233000)
- 11.1: Sealing washer (Order-nr. 0319100M)
- 12: 双重开关阀AV1 (Order-nr. 42320000)
- 12.1: extension for Overflow pipe (Order-nr. 42313000)
- 12.2: Pneumatic hose (Order-nr. 42319000)
- 12.3: 紧固件 (Order-nr. 42310000)
- 13: 阀芯座 (Order-nr. 42599000)
- 14: 配件, 1.13m (Order-nr. 3855800M)
- 15: Water connection (Order-nr. 48561000)
- 16: Flow restrictor (Order-nr. 42300000)*
- 17: Retrofit kit for shower toilets Sensia Arena and IGS (Order-nr. 40899000)*
- 18: 防噪配套 (Order-nr. 37131000)*
- 19: 4.5 l adapter for GD2 (Order-nr. 42333000)*
- 20: 配件 (Order-nr. 38779000)*
- 21: AV1卸流阀 (Order-nr. 38796000)*