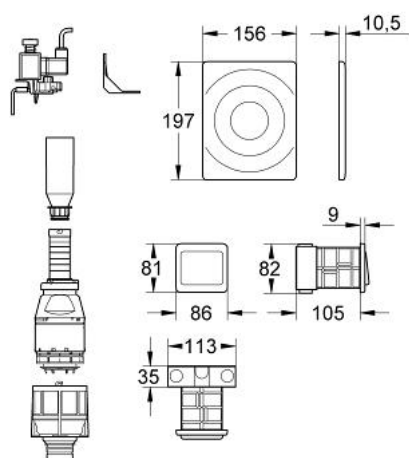


## 38 087 000 传动钮

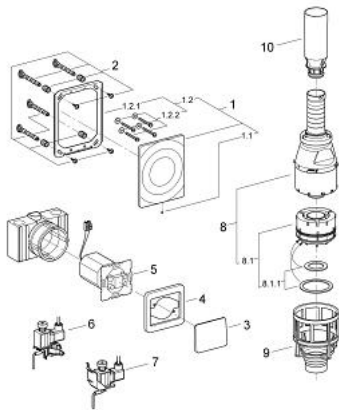


### 产品描述

- Colour: 镀铬
- 暗置式安装
- 面板 156 x 197 毫米
- surface actuation with transformer
- 操作电压 230 V AC, 50 Hz, 5 VA
- 暗置式安装盒Ø 113 x 105 x 82毫米
- 起重磁盘
- 2米连接线



## 38 087 000 传动钮



备件, 一月 2000 – now

1: 冲水面板 (Order-nr. 43553000)

1.1: 螺丝

(Order-nr. 43094000)

1.2: 托板框架 (Order-nr. 43215000)

1.2.1: 配件套组 (Order-nr. 4308500M)

2: 配件套组 (Order-nr. 4215800M)

3: 操作钮 (Order-nr. 43685000)

4: 框架 (Order-nr. 43684000)

5: 操作杆

(Order-nr. 43661000)

6: Lifting magnet (Order-nr. 42162000)

7: Lifting magnet (Order-nr. 42745000)

7.1: Traverse (Order-nr. 42908000)

8: Servo开关阀 (Order-nr. 42690000)

8.1: 出水接头 (Order-nr. 43544000)

8.1.1: 紧固件 (Order-nr. 43808000)

9: 阀芯座 (Order-nr. 42691000)

10: 延长件 (Order-nr. 42689000)