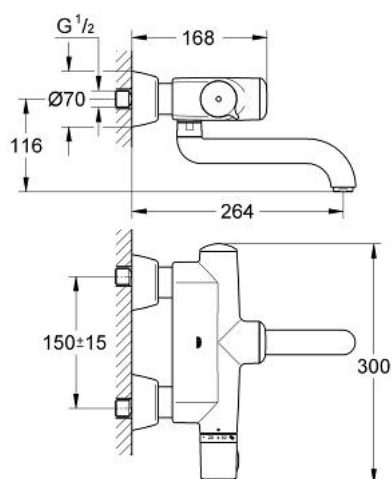


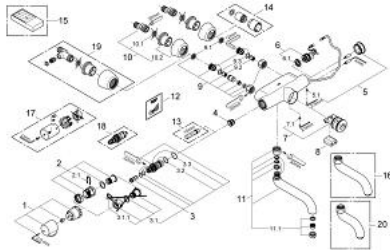
36 239 000 欧瑞宝 E 感应式恒温盥洗盆混合龙头



产品描述

- Colour: 镀铬
- 墙面安装
- IR-electronic with proximity start-detection
- automatical stop by user detection
- 6V锂离子电池，CR-P2型
- 多级电池状态显示
- 出厂预设60秒后自动停止出水
- 金属本体带冷触设计
- 温度刻度把手带温度调节35到45摄氏度
- 3.5或11分钟高温消毒永久运行
- 遥控启动功能 36 206 000:
- 1或3天无使用自动冲水
- 恒温热敏内置元件
- 防回流阀
- 滤网
- 旋转出水
- 130°旋转限制，可封闭式
- 192 毫米
- 层流流量调整器，9升/分钟
- S弯
- 暗置防松螺丝
- 防护等级IP69K
- 获得DIN 4109 I类隔音认证
- CE认证
- 高仪乐可节技术减少耗水量
- 高仪持久镀铬饰面

36 239 000 欧瑞宝 E 感应式恒温盥洗盆混合龙头



备件, 六月 2008 – now

- 1: 调温把手 (Order-nr. 47409000)
- 2: 止水环 (Order-nr. 47641000)
- 2.1: 钳 (Order-nr. 0574400M)
- 3: 恒温热敏元件 (Order-nr. 47217000)
- 3.1: 隔离垫圈及调节螺母 (Order-nr. 47300000)
- 3.1.1: 钳 (Order-nr. 0574400M)
- 3.2: Sealing washer Ø 21 x Ø 2 (Order-nr. 0599900M)
- 3.3: Sealing washer Ø 24 x Ø 2 (Order-nr. 0119600M)
- 4: 恒温座 (Order-nr. 01460000)
- 5: 面板 (Order-nr. 43384000)
- 5.1: 螺丝
(Order-nr. 4346200M)
- 6: 电池阀 (Order-nr. 42323000)
- 6.1: 滤网 (Order-nr. 42798000)
- 7: 阀芯 (Order-nr. 42130000)
- 7.1: 螺丝
(Order-nr. 4346200M)
- 8: 电池 (Order-nr. 42886000)
- 9: 埋头螺母 (Order-nr. 47643000)
- 9.1: 滤网 (Order-nr. 0726400M)
- 9.2: 防回流阀 (Order-nr. 08565000)
- 9.3: O型圈 ø 17 x ø 2 (Order-nr. 0305500M)
- 10: S弯 (Order-nr. 12058000)
- 10.1: 紧固件 (Order-nr. 0138600M)
- 10.2: Covering escutcheon (Order-nr. 45545000)
- 11: Spout for Europlus E thermostat (Order-nr. 42132000)
- 11.1: 流量限制器 (Order-nr. 13960000)
- 12: Sticker with pictograph (Order-nr. 4217800M)
- 13: 套筒扳手 (Order-nr. 19070000)*
- 14: 延长件 (Order-nr. 46238000)*
- 15: 红外线遥控器 (Order-nr. 36206000)*
- 16: Spout for Europlus E thermostat (Order-nr. 42133000)*
- 17: Metal handle temperature control (Order-nr. 47763000)*
- 18: 恒温热敏元件 (Order-nr. 47657000)*
- 19: S弯 (Order-nr. 12051000)*
- 20: Spout for Europlus E thermostat (Order-nr. 43957000)*