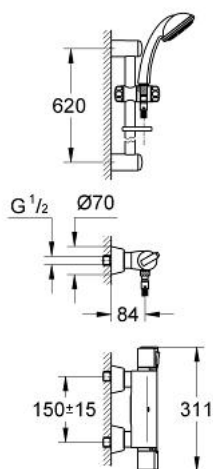


34 221 000 **GROHMASTER GROHTHERM 2000 EV**

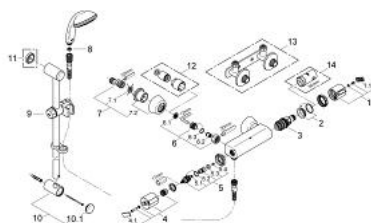


产品描述

- Colour: 镀铬
- 高仪乐可节技术减少耗水量
- 高仪持久镀铬饰面



34 221 000 GROHMASTER GROHTHERM 2000 EV



备件, 八月 2008 – now

- 1: 调温把手 (Order-nr. 47742000)
- 1.1: Cover cap (Order-nr. 1007500M)
- 2: 碗盆龙头<br type="_moz" /> (Order-nr. 47765000)
- 3: 恒温阀芯,3/4"US<br type="_moz" /> (Order-nr. 47483000)
- 4: 止水阀把手 (Order-nr. 47744000)
- 4.1: Cover cap (Order-nr. 1007500M)
- 5: 阀芯 (Order-nr. 07146000)
- 5.1: Sealing washer Ø 6 x Ø 2 (Order-nr. 0128300M)
- 5.2: O型圈 Ø 18.2 x Ø 1.7 (Order-nr. 0392400M)
- 5.3: 紧固件 (Order-nr. 0529100M)
- 6: 防回流阀 (Order-nr. 47189000)
- 6.1: 滤网 (Order-nr. 0726400M)
- 6.2: 防回流阀 (Order-nr. 08565000)
- 6.3: O型圈 ø 17 x ø 2 (Order-nr. 0305500M)
- 7: S弯 (Order-nr. 12058000)
- 7.1: 紧固件 (Order-nr. 0138600M)
- 7.2: Covering escutcheon (Order-nr. 45545000)
- 8: 滤网 (Order-nr. 0700200M)
- 9: 滑块 (Order-nr. 07659000)
- 10: 花洒杆托架 (Order-nr. 45362000)
- 10.1: 面板 (Order-nr. 45363000)
- 11: 平衡板 (Order-nr. 45406000)*
- 12: 延长件 (Order-nr. 46238000)*
- 13: Bracket for exposed installation (Order-nr. 18153000)*
- 14: 套筒扳手 (Order-nr. 19332000)*

* Optional accessories