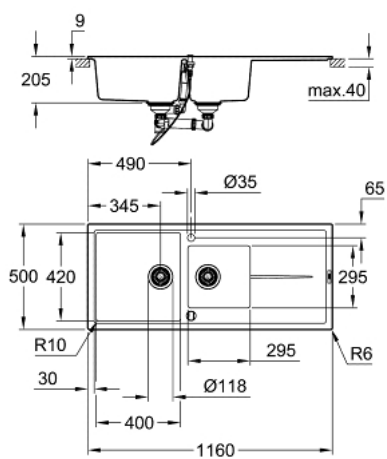
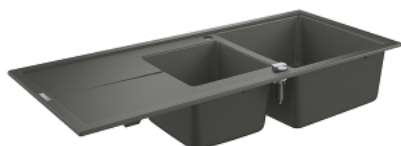


31 643 AT0 K400 复合花岗岩水槽带滤水板



产品描述

- Colour: 灰色
- model: K400 80-C 116/50 1.5 rev
- mounting type: top mount
- 材料: 符合花岗岩
- 高仪静流技术
- 橱柜最小尺寸: 800 毫米
- dimensions: 1160 x 500 mm
- 1 bowl: 400 x 420 x 205 mm
- 2 bowl: 295 x 295 x 205 mm
- outer radius: R6, inner bowl radius: R10
- 高仪快速安装系统
- sink mountable left or right
- cut-out: 1140 x 480 mm
- drainer: automatic waste fitting
- accessories included: automatic waste fitting with rotary handle, waste kit, basket strainer waste, mounting set
- 可选按压式去水配件 (40 986 SD0)
- amount of fasteners included (top mount): 10
- heat resistant up to 180° C

31 643 AT0 K400 复合花岗岩水槽带滤水板

备件, 五月 2022 – now

1: 落水塞 (Order-nr. 42588SD1)

2: Waste trap (Order-nr. 42619000)

3: Cover element (Order-nr. 42590SD1)

4: 回转接头 (Order-nr. 42587SD0)

5: 落水塞 (Order-nr. 42589SD1)

