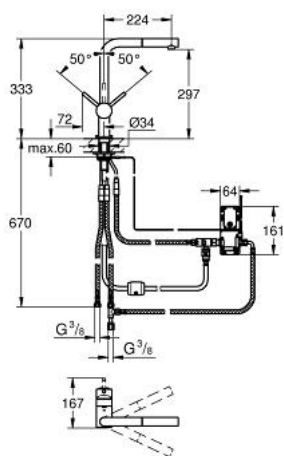


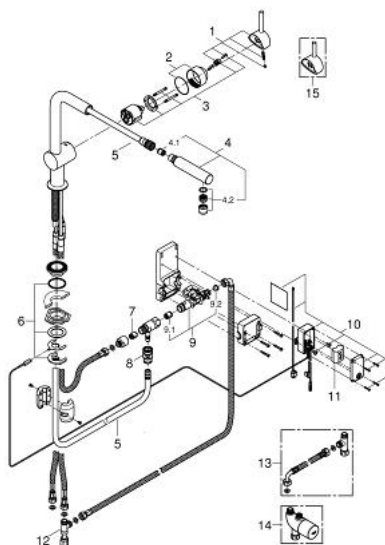
## 31 360 DC0 明达TOUCH 厨房龙头



### 产品描述

- Colour: 超钢
- 单孔安装
- Touch: activation of cold water via skin contact
- 锂电 6 V, CR-P2
- CE认证
- indication of battery status by different impulses
- 安全关闭电路
- 电池阀
- 出厂预设60秒后自动停止出水
- 防护等级IP44
- 46 毫米阀芯
- 高仪持久表面
- L型出水嘴
- 可调流量限制器
- 旋转出水
- 旋转角度为360°
- 拔出式起跑器出水
- 自动返回
- 综合防回流阀
- 软管
- 快速安装系统
- 止逆阀
- optional:
- upgrade for Touch function with mixed water:
- Grohtherm Micro 34 023 000
- connection set 47 533 000
- 推荐最低水压 1.0 Bar

## 31 360 DC0 明达TOUCH 厨房龙头



备件, 九月 2013 – now

- 1: 把手 (Order-nr. 46015DC0)
- 2: 面板 (Order-nr. 46025DC0)
- 3: 阀芯 (Order-nr. 46048000)
- 4: 手持花洒 (Order-nr. 46858DC0)
- 4.1: 防回流阀 (Order-nr. 08565000)
- 4.2: 起泡器 (Order-nr. 13967DC0)
- 5: 花洒软管 (Order-nr. 46881000)
- 6: Shank mounting kit (Order-nr. 46345000)
- 7: 防回流阀 (Order-nr. 08565000)
- 8: 快速连接器 (Order-nr. 46338000)
- 9: 电池阀 (Order-nr. 48213000)
- 9.1: 防回流阀 (Order-nr. 08565000)
- 9.2: 滤网 (Order-nr. 42395000)
- 10: 控制器 (Order-nr. 48214000)
- 11: 电池 (Order-nr. 42886000)
- 12: Original WAS® T-piece 3/8" (Order-nr. 41007000)
- 13: 连接管 (Order-nr. 47533000)\*
- 14: 恒温防烫装置 (Order-nr. 34487000)\*
- 15: 把手 (Order-nr. 40684DC0)\*

\* Optional accessories