

Technical drawing of the GROHE 33 610 kitchen faucet and hot water dispenser. The drawing includes a perspective view of the faucet, a perspective view of the hot water dispenser, and three detailed technical views with dimensions.

Faucet Dimensions:

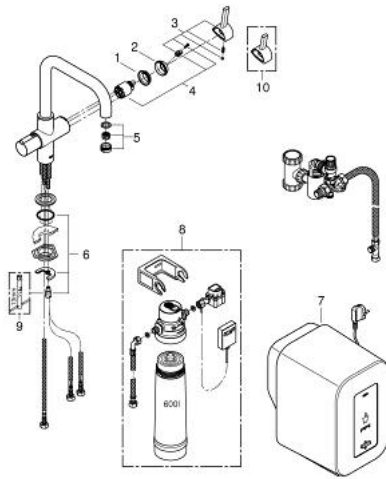
- Spout height: 226 mm
- Spout angle: 55°
- Spout width: 55 mm
- Mounting hole diameter: Ø34 mm
- Mounting hole spacing: 63 mm
- Mounting hole diameter: Ø54 mm
- Max. deck thickness: max. 60 mm
- Deck to spout base: 254 mm
- Deck to spout tip: 357 mm
- Deck to spout base (alternative): 445 mm
- Deck to spout tip (alternative): 1345 mm
- Connection: G 3/8
- Rotation: 180°
- Mounting hole diameter: Ø40 mm
- Connection: G 1/2
- Connection: G 3/8

Hot Water Dispenser Dimensions:

- Width: 300 mm
- Height: 325 mm
- Connection: G 3/8
- Connection: G 1/2
- Height: 1600 mm
- Width: 210 mm

- Colour: 镀铬
- 包含：
 - 高仪瑞德两用单把手厨房龙头
- 单孔安装
- U型出水
 - 高仪儿童锁沸水专用手柄
- 经认证的安全把手带拉拔和旋转
- 阀芯 1/2"
- 高仪持久表面
- 35 毫米陶瓷阀芯
- 冷触
- 旋转式，出水管隔热
- 旋转范围180°
- 独立水道
- 软管
- 止逆阀
- 高仪瑞德烧水器连接管
- 高仪瑞德单一烧水器
- 蓄热3升沸水
- 水压：1至7巴
- 带灵活连接软管和沸水连接
- CE认证
- 电源 230 V 50 Hz 30 VA
- 能耗为2100瓦
- 备用能耗为15瓦
- 蓄热热水器尺寸： 325 x 210 x 300毫米

30 145 000 高仪瑞德 厨房龙头,4L



备件, 二月 2013 – now

1: 埋头螺母 (Order-nr. 46460000)

2: 面板 (Order-nr. 46116000)

3: 把手 (Order-nr. 46653000)

4: 阀芯 (Order-nr. 46374000)

5: 起泡器 (Order-nr. 13263000)

6: Shank mounting kit (Order-nr. 46249000)

7: Single boiler without safety unit (Order-nr. 40409000)

8: Filter with filter head (Order-nr. 40438001)*

9: 扳手 (Order-nr. 19017000)*

10: Shorter mixed water lever (Order-nr. 40621000)*

* Optional accessories