

Pure Freude
an Wasser

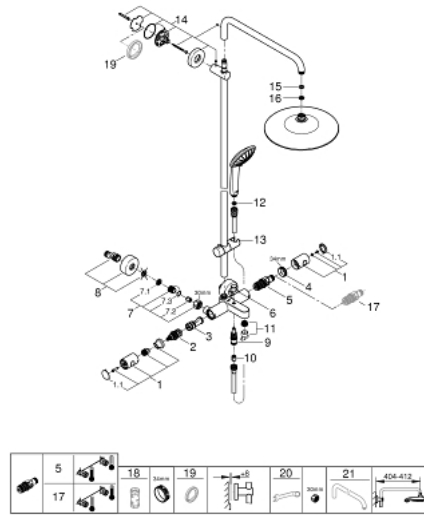


27 475 001 奥菲莉亚系统 260 恒温淋浴系统，带下出水

产品描述 (2/2)

• 最低流量：7升/分钟

27 475 001 奥菲莉亚系统 260 恒温淋浴系统，带下出水



备件, 十月 2016 – 三月 2021

- 1: 金属把手 (Order-nr. 47984000)
- 1.1: Cover cap (Order-nr. 6458500M)
- 2: 综合开关分水器 (Order-nr. 47364000)
- 3: 流量限制器 (Order-nr. 47887000)
- 4: 碗盆龙头 (Order-nr. 47743000)
- 5: 恒温阀芯, 1/2" US (Order-nr. 47439000)
- 6: (Order-nr. 65648000)
- 7: 防回流阀 (Order-nr. 47189000)
- 7.1: 滤网 (Order-nr. 0726400M)
- 7.2: 防回流阀 (Order-nr. 08565000)
- 7.3: O型圈 17 x 2 (Order-nr. 0305500M)
- 8: S弯 (Order-nr. 12662000)
- 9: 分水器 (Order-nr. 65655000)
- 10: 防回流阀 (Order-nr. 08565000)
- 11: 起泡器 (Order-nr. 13926000)
- 12: 滤网 (Order-nr. 0700200M)
- 13: 滑块 (Order-nr. 12140000)
- 14: 花洒杆托架 (Order-nr. 48279000)
- 15: 连接垫圈 (Order-nr. 0138900M)
- 16: 滤网 (Order-nr. 48007000)
- 17: GROHE TurboStat cartridge 1/2" (Order-nr. 47175000)*
- 18: 套筒扳手 (Order-nr. 19332000)*
- 19: 平衡板 (Order-nr. 27180000)*
- 20: Special spanner (Order-nr. 19377000)*
- 21: 花洒臂 (Order-nr. 14047000)*

* Optional accessories