

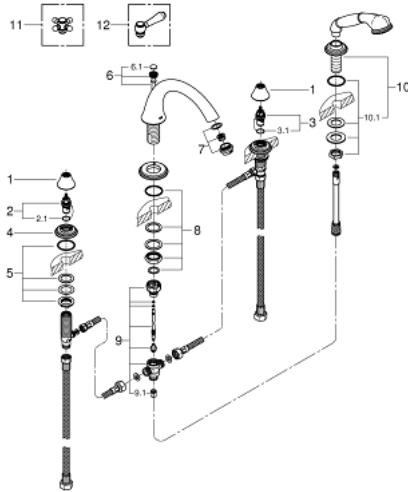
25 506 EN0 日内瓦 4孔浴缸龙头组合



产品描述

- Colour: 拉丝镍
- 无把手
- 浴缸出水口10"
- 高版本
- 1/2" 阀门
- 日内瓦手持花洒
- 软管
- 沐浴软管2000mm
- 2000 毫米
- 抗压软管
- 用于日内瓦十字把手和一字把手18 733 / 18 734
- 高仪持久表面

25 506 EN0 日内瓦 4孔浴缸龙头组合



备件, 二月 2017 – now

- 1: 面板 (Spare part-nr. 45907EN0)
- 2: 陶瓷阀芯 (Spare part-nr. 45882000)
- 2.1: O型圈 $\varnothing 18.2 \times \varnothing 1.7$ (Spare part-nr. 0392400M)
- 3: 陶瓷阀芯 (Spare part-nr. 45883000)
- 3.1: O型圈 $\varnothing 18.2 \times \varnothing 1.7$ (Spare part-nr. 0392400M)
- 4: 法兰盘 (Spare part-nr. 45906EN0)
- 5: Shank fastening assembly M28 x 1.5 (Spare part-nr. 45025000)
- 6: 落水 (Spare part-nr. 45817EN0)
- 6.1: Marking piece (Spare part-nr. 45763L00)
- 7: 起泡器 (Spare part-nr. 13934EN0)
- 8: Shank mounting kit (Spare part-nr. 46078000)
- 9: 分水器 (Spare part-nr. 45470000)
- 9.1: 防回流阀 (Spare part-nr. 08565000)
- 10: 花洒托架 (Spare part-nr. 45819EN0)
- 10.1: Shank mounting kit (Spare part-nr. 07660000)
- 11: 十字把手 (Spare part-nr. 18733EN0)*
- 12: 一字把手 (Spare part-nr. 18734EN0)*

* Optional accessories