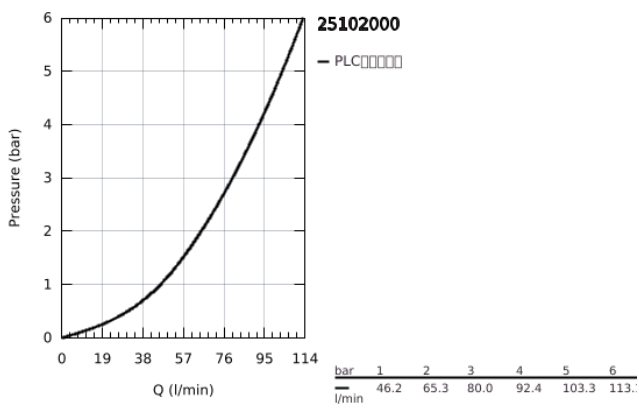
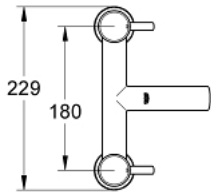
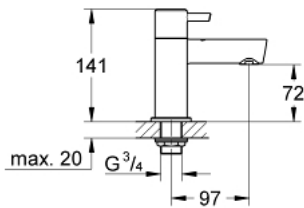


25 102 000 新康斯特 双把手浴缸龙头 1/2

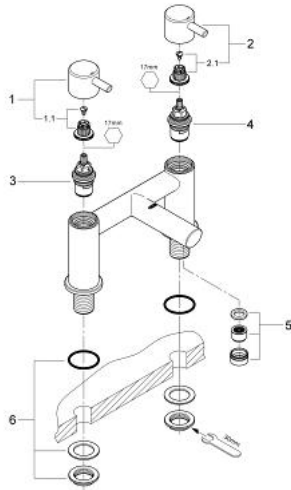


产品描述

- Colour: 镀铬
- 柱式安装
- 金属把手
- 耐久阀芯
- 高仪持久镀铬饰面
- 建议水压为0.2至5.0巴



25 102 000 新康斯特 双把手浴缸龙头 1/2



备件, 十二月 2009 – now

1: 康斯特把手 (热)

(Spare part-nr. 48033000)

1.1: 紧固工具 (Spare part-nr. 45186000)

1.1.1: O型圈 $\varnothing 18.2 \times \varnothing 1.7$ (Spare part-nr. 0392400M)

2: 雅欧一字式把手, 2只 (Spare part-nr. 48034000)

2.1: 紧固工具 (Spare part-nr. 45186000)

3: 阀芯 (Spare part-nr. 45887000)

4: 阀芯 (Spare part-nr. 45888000)

5: 流量限制器 (Spare part-nr. 46162000)

6: Repl. kit for shank fastening (Spare part-nr. 45163000)