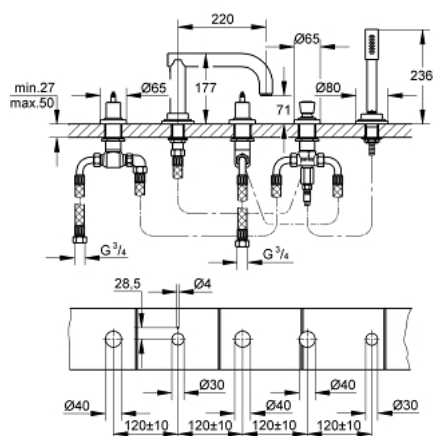


25 065 000 雅欧 五孔浴缸龙头组合

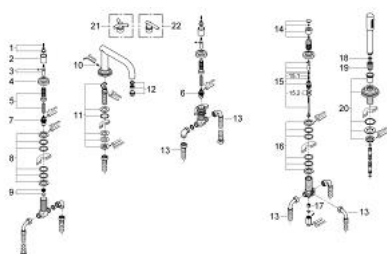


产品描述

- Colour: 镀铬
- 2个3/4" 阀芯
- 手持花洒 28034
- 金属软管
- 浴缸进水口带起泡器
- 无把手
- BSP螺纹
- 高仪持久镀铬饰面



25 065 000 雅欧 五孔浴缸龙头组合



备件, 八月 2007 – now

- 1: 紧固工具 (Order-nr. 45605000)
- 2: 套管 (Order-nr. 11221000)
- 3: 延长件 (Order-nr. 45607000)
- 4: 法兰盘 (Order-nr. 11222000)
- 5: 延长件 (Order-nr. 45202000)
- 6: 阀芯 (Order-nr. 45887000)
- 6.1: O型垫圈 (Order-nr. 45583000)
- 7: 阀芯 (Order-nr. 45888000)
- 7.1: O型垫圈 (Order-nr. 45583000)
- 9: 阀芯座 (Order-nr. 45345000)
- 10: 出水口连接配套 (Order-nr. 47670000)
- 11: Repl. kit for shank fastening (Order-nr. 45163000)
- 12: 起泡器 (Order-nr. 13927000)
- 12.1: Repl.kit f.aerator M28x1 (Order-nr. 45029000)
- 13: 软管 (Order-nr. 45446000)
- 13.1: 紧固件 (Order-nr. 0138600M)
- 14: 面板 (Order-nr. 07576000)
- 14.1: 面板 (Order-nr. 03288000)
- 15: 分水器 (Order-nr. 45443000)
- 15.1: Sealing washer Ø 6 x Ø 2 (Order-nr. 0128300M)
- 15.2: Sealing washer (Order-nr. 0120500M)
- 16: Repl. kit for shank fastening (Order-nr. 45444000)
- 17: 防回流阀 (Order-nr. 08565000)
- 18: 滤网 (Order-nr. 0700200M)
- 19: 锥形螺母 (Order-nr. 08864000)
- 20: 花洒托架 (Order-nr. 47668000)
- 21: 三叶形把手 (Order-nr. 18033000)*
- 22: 一字形把手 (Order-nr. 18034000)*

* Optional accessories