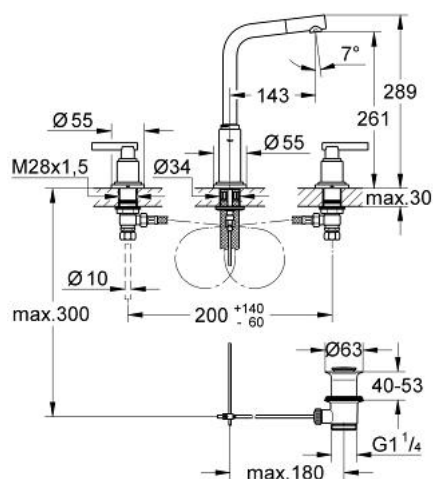


20 382 001 雅欧 双把手三孔面盆混合龙头 1/2" M号

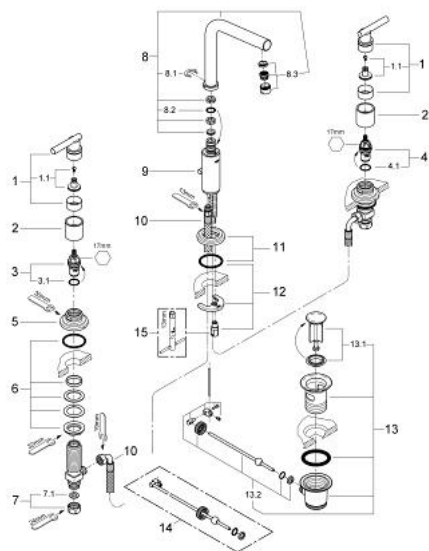


产品描述

- Colour: 镀铬
- swivel 7° tubular spout with mousseur and stop limiter
- 90度陶瓷阀芯
- 1 1/4" 提拉杆落水
- 抗压软管
- 接头带10.5毫米孔
- 高仪星闪镀铬饰面



20 382 001 雅欧 双把手三孔面盆混合龙头 1/2" M号



备件, 四月 2011 – now

- 1: 一字形把手 (Order-nr. 45609000)
- 1.1: 紧固工具 (Order-nr. 45605000)
- 2: 套管 (Order-nr. 08124000)
- 3: 陶瓷阀芯 (Order-nr. 45882000)
- 3.1: O型圈 Ø 18.2 x Ø 1.7 (Order-nr. 0392400M)
- 4: 陶瓷阀芯 (Order-nr. 45883000)
- 4.1: O型圈 Ø 18.2 x Ø 1.7 (Order-nr. 0392400M)
- 5: 法兰盘 (Order-nr. 45630000)
- 6: Shank fastening assembly M28 x 1.5 (Order-nr. 45025000)
- 7: Coupling nut 1/2" (Order-nr. 1290100M)
- 7.1: 连接垫圈 (Order-nr. 0138900M)
- 8: 出水口 (Order-nr. 13231000)
- 8.1: 密封环 (Order-nr. 0806500M)
- 8.2: Sealing washer (Order-nr. 0128500M)
- 8.3: 起泡器 (Order-nr. 64186000)
- 9: 落水 (Order-nr. 06575000)
- 10: 软管 (Order-nr. 45461000)
- 11: 法兰盘 (Order-nr. 45629000)
- 12: Shank mounting kit (Order-nr. 46249000)
- 13: 落水配套 (Order-nr. 28910000)
- 13.1: 落水塞 (Order-nr. 07182000)
- 13.2: 球头杆 (Order-nr. 07052000)
- 14: 球头杆 (Order-nr. 07341000)*
- 15: 扳手 (Order-nr. 19017000)*

* Optional accessories