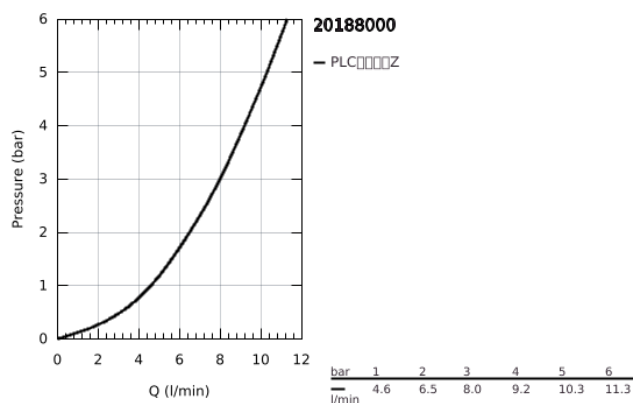
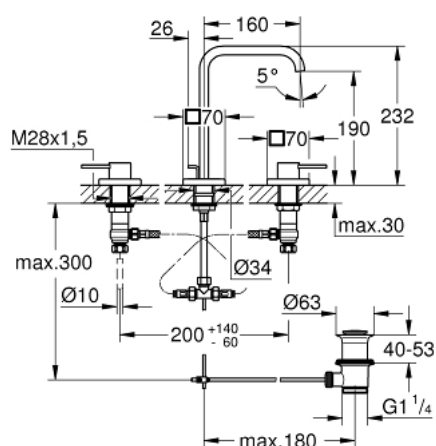


## 20 188 000 雅律 双把手三孔面盆混合龙头 1/2" M号

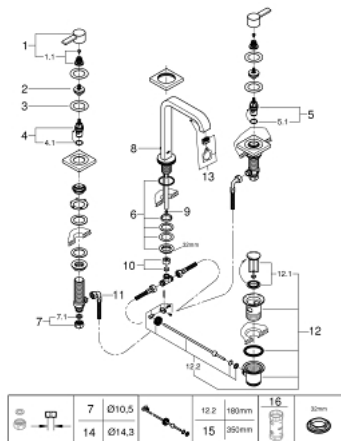


### 产品描述

- Colour: 镀铬
- 带一字把手
- 金属装饰盖
- 90度陶瓷阀芯
- 高仪持久镀铬饰面
- 流量限制器 8 升/分钟
- 出水口带起泡器
- 抗压软管
- 1 1/4" 提拉杆落水



## 20 188 000 雅律 双把手三孔面盆混合龙头 1/2" M号



备件, 八月 2018 – now

- 1: 把手 (Order-nr. 48043000)
- 1.1: 紧固工具 (Order-nr. 45186000)
- 1.1.1: O型圈 Ø 18.2 x Ø 1.7 (Order-nr. 0392400M)
- 2: 延长件 (Order-nr. 48045000)
- 3: Sealing washer (Order-nr. 48047000)
- 4: 陶瓷阀芯 (Order-nr. 45882000)
- 4.1: O型圈 Ø 18.2 x Ø 1.7 (Order-nr. 0392400M)
- 5: 陶瓷阀芯 (Order-nr. 45883000)
- 5.1: O型圈 Ø 18.2 x Ø 1.7 (Order-nr. 0392400M)
- 6: Shank fastening assembly M28 x 1.5 (Order-nr. 45025000)
- 7: Coupling nut 1/2" (Order-nr. 1290100M)
- 7.1: 连接垫圈 (Order-nr. 0138900M)
- 8: 落水 (Order-nr. 65196000)
- 9: Flow limiter (Order-nr. 46324000)
- 10: 压力管 3/8" (Order-nr. 12914000)
- 11: 软管 (Order-nr. 45704000)
- 12: 落水配套 (Order-nr. 28910000)
- 12.1: 落水塞 (Order-nr. 07182000)
- 12.2: 球头杆 (Order-nr. 07052000)
- 13: 起泡器 (Order-nr. 13220000)
- 14: Coupling nut 1/2" x 14.5 mm (Order-nr. 1290200M)\*
- 15: 球头杆 (Order-nr. 07341000)\*
- 16: 套筒扳手 (Order-nr. 19332000)\*
- \* Optional accessories