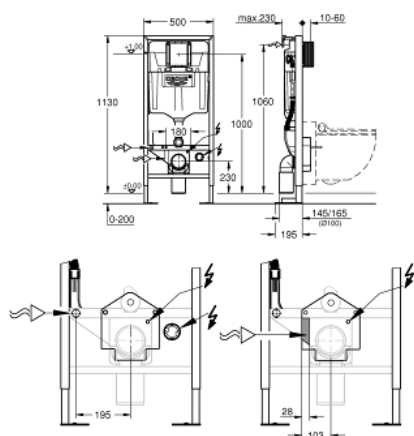


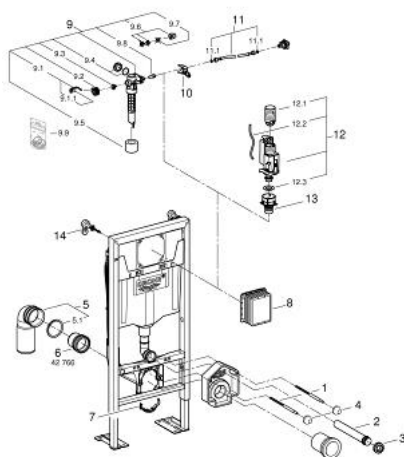
39 128 001 RAPID SL 高仪赛雅智能座厕部件，安装高度1.13米

产品描述

- GD2水箱
- 冲水箱GD 2，6 - 9 l，具有以下特点：
- 含安装支撑件38 558 00M，用于水箱固定安装
- 如需安装小号冲水面板，请订购 改造款轴 40 911 000 （单独销售）



39 128 001 RAPID SL 高仪赛雅智能座厕部件，安装高度1.13米



备件, 九月 2015 – now

- 1: 螺栓 (Order-nr. 4276400M)
- 2: 嵌墙式出水接口 (Order-nr. 43352000)
- 3: 连接器 (Order-nr. 37119000)
- 4: Basin fastening (Order-nr. 43511000)
- 5: Outlet elbow (Order-nr. 42216000)
- 5.1: Sealing washer (Order-nr. 4207700M)
- 6: 加长管 (Order-nr. 42766000)
- 7: Support for outlet bend (Order-nr. 42243000)
- 8: 检查轴 (Order-nr. 66791000)
- 9: 充水阀 (Order-nr. 37095000)
- 9.1: 把手 (Order-nr. 43734000)
- 9.1.1: 紧固件 (Order-nr. 4377000M)
- 9.2: Valve head (Order-nr. 43536000)
- 9.3: 膜 (Order-nr. 4375800M)
- 9.4: 螺帽 (Order-nr. 43735000)
- 9.5: Valve FLOAT, 5 pcs. (Order-nr. 4379100M)
- 9.6: 密封配套 (Order-nr. 43722000)*
- 10: Support device (Order-nr. 42246000)
- 11: 软管 (Order-nr. 42233000)
- 11.1: Sealing washer (Order-nr. 0319100M)
- 12: 双重开关阀AV1 (Order-nr. 42320000)
- 12.1: extension for Overflow pipe (Order-nr. 42313000)
- 12.2: Pneumatic hose (Order-nr. 42319000)
- 12.3: 紧固件 (Order-nr. 42310000)
- 13: Valve seat for GD2 (Order-nr. 42315000)
- 14: 配件, 1.13m (Order-nr. 3855800M)

* Optional accessories