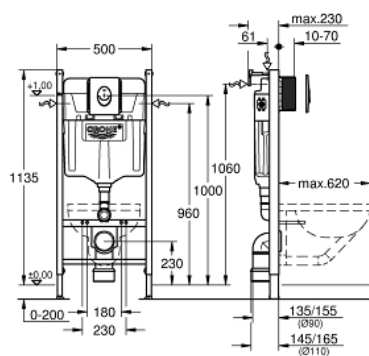


38 988 000 **RAPID SL** 座厕三件套，安装高度为1.13米

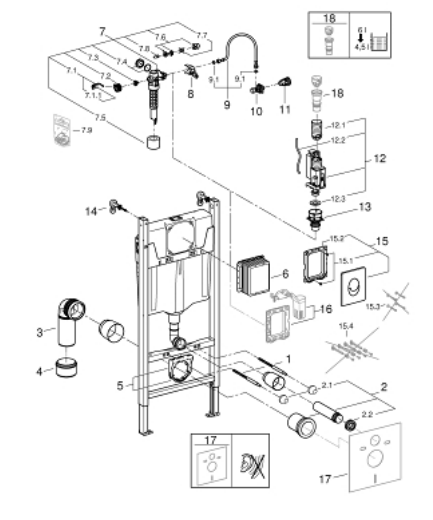


产品描述

- Colour: 镀铬
- GD2水箱
- 包括:
- 座厕用Rapid SL元件 (38 840 000)
- 斯科特气动冲水面板, 镀铬, 立式安装 (38 505 000)
- 安装支撑件 (38 558 00M)
- including Scandinavian adapter 38 338 000



38 988 000 **RAPID SL** 座厕三件套，安装高度为1.13米



备件, 九月 2013 – now

- 1: 螺栓 (Order-nr. 4276400M)
- 2: 连接管 (Order-nr. 37311K00)
- 2.1: Basin fastening (Order-nr. 43511SH0)
- 2.2: 连接器 (Order-nr. 37119000)
- 3: PP-outlet bend Ø 90 mm (Order-nr. 42327000)
- 4: Reducer (Order-nr. 42242000)
- 5: Support for outlet bend (Order-nr. 42243000)
- 6: 检查轴 (Order-nr. 66791000)
- 7: 充水阀 (Order-nr. 37095000)
- 7.1: 把手 (Order-nr. 43734000)
- 7.1.1: 紧固件 (Order-nr. 4377000M)
- 7.2: Valve head (Order-nr. 43536000)
- 7.3: 膜 (Order-nr. 4375800M)
- 7.4: 螺帽 (Order-nr. 43735000)
- 7.5: Valve FLOAT, 5 pcs. (Order-nr. 4379100M)
- 7.6: 密封配套 (Order-nr. 43722000)*
- 8: Support device (Order-nr. 42246000)
- 9: 软管 (Order-nr. 42397000)
- 9.1: Sealing washer (Order-nr. 0319100M)
- 10: 角阀 (Order-nr. 42396000)
- 11: 进水管 (Order-nr. 38338000)
- 12: 双重开关阀AV1 (Order-nr. 42320000)
- 12.1: extension for Overflow pipe (Order-nr. 42313000)
- 12.2: Pneumatic hose (Order-nr. 42319000)
- 12.3: 紧固件 (Order-nr. 42310000)
- 13: Valve seat for GD2 (Order-nr. 42315000)
- 14: 配件, 1.13m (Order-nr. 3855800M)
- 15: 冲水面板 (Order-nr. 38505000)
- 15.1: 螺丝 (Order-nr. 6636200M)
- 15.2: 托板框架 (Order-nr. 43207000)
- 15.3: 配件套组 (Order-nr. 4308500M)*
- 15.4: 配件套组 (Order-nr. 4215800M)*
- 16: AV1卸流阀 (Order-nr. 38796000)*
- 17: 防噪配套 (Order-nr. 37131000)*
- 18: 4.5 l adapter for GD2 (Order-nr. 42333000)*