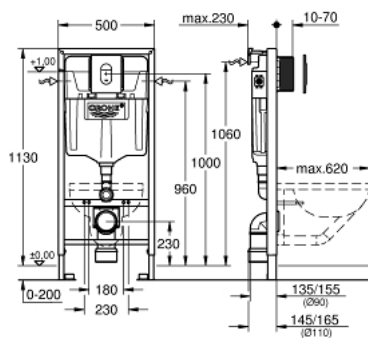


38 929 000 **RAPID SL** 座厕四件套，安装高度为1.13米

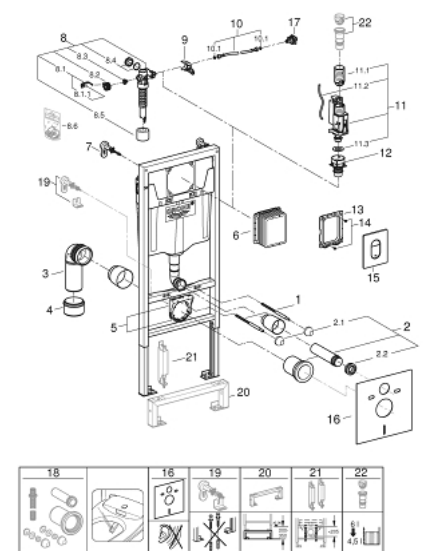


产品描述

- Colour: 镀铬
- GD2水箱
- 包括:
- 座厕用Rapid SL元件 (38 528 001)
- 雅瑞娜都市型冲水面板，镀铬，立式安装 (38 844 000)
- 安装支撑件 (38 558 00M)
- 防噪马桶组合



38 929 000 **RAPID SL** 座厕四件套，安装高度为1.13米



备件，十月 2021 – now

- 1: 螺栓 (Order-nr. 4276400M)
- 2: 连接管 (Order-nr. 37311K00)
- 2.1: Basin fastening (Order-nr. 43511SH0)
- 2.2: 连接器 (Order-nr. 37119000)
- 3: PP-outlet bend Ø 90 mm (Order-nr. 42327000)
- 4: Reducer (Order-nr. 42242000)
- 5: Support for outlet bend (Order-nr. 42243000)
- 6: 检查轴 (Order-nr. 66791000)
- 7: 配件,1.13m (Order-nr. 3855800M)
- 8: 充水阀 (Order-nr. 37095000)
- 8.1: 把手 (Order-nr. 43734000)
- 8.1.1: 紧固件 (Order-nr. 4377000M)
- 8.2: Valve head (Order-nr. 43536000)
- 8.3: 膜 (Order-nr. 4375800M)
- 8.4: 螺帽 (Order-nr. 43735000)
- 8.5: Valve FLOAT, 5 pcs. (Order-nr. 4379100M)
- 8.6: 密封配套 (Order-nr. 43722000)*
- 9: Support device (Order-nr. 42246000)
- 10: 软管 (Order-nr. 42233000)
- 10.1: Sealing washer (Order-nr. 0319100M)
- 11: 双重开关阀AV1 (Order-nr. 42320000)
- 11.1: extension for Overflow pipe (Order-nr. 42313000)
- 11.2: Pneumatic hose (Order-nr. 42319000)
- 11.3: 紧固件 (Order-nr. 42310000)
- 12: Valve seat for GD2 (Order-nr. 42315000)
- 13: 托板框架 (Order-nr. 43207000)
- 14: 螺丝 (Order-nr. 6636200M)
- 15: Top plate with push button (Order-nr. 42378000)
- 16: 防噪配套 (Order-nr. 37131000)
- 17: Water Connection (Order-nr. 48561000)
- 18: Retrofit kit for shower toilets Sensia Arena and IGS (Order-nr. 40899000)*
- 19: Xtra wall brackets, flexible placing (Order-nr. 38733000)*
- 20: 延长件 (Order-nr. 38629000)*
- 21: 配件 (Order-nr. 38779000)*
- 22: 4.5 l adapter for GD2 (Order-nr. 42333000)*