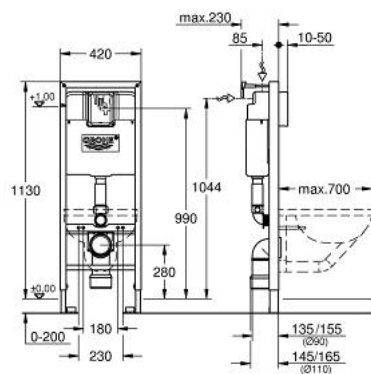


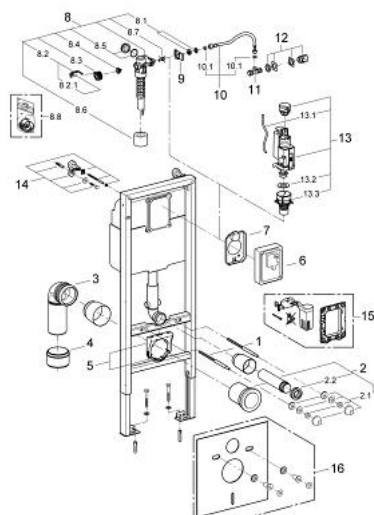
38 711 001 马桶用RAPID SL



产品描述

- 6升水箱
- 安装高度为1.13米
- 残疾人用
- 用于出水高度70厘米的马桶
- 挂墙用
- 粉末喷涂处理钢架，自立式
- 用于干包层，完整预装
- 附固定连接
- 安装物料
- TÜV认证
- 2个马桶固定螺栓
- 陶瓷件紧固设备
- 固定螺栓长度180/230毫米
- 出水弯管 90毫米
- 深度可调
- 减径管 90/110毫米
- 进水出水连接配套
- 气动冲水阀:双冲,单冲(中断冲水)及不可中断冲水
- 低噪音(获德国噪音认证)
- 防冷凝
- 角阀
- 进水口带水管固定件
- 带推入配合灵活软管接头
- 2个挂墙式托板带固定材料

38 711 001 马桶用RAPID SL



备件, 三月 2013 – now

- 1: 螺栓 (Order-nr. 4276400M)
- 2: 连接管 (Order-nr. 37311K00)
- 2.1: Basin fastening (Order-nr. 43511SH0)
- 2.2: 连接器 (Order-nr. 37119000)
- 3: PP-outlet bend Ø 90 mm (Order-nr. 42327000)
- 4: Reducer (Order-nr. 42242000)
- 5: Support for outlet bend (Order-nr. 42243000)
- 6: 保护盖 (Order-nr. 43944000)
- 7: 保护面板
(Order-nr. 43552000)
- 8: 充水阀 (Order-nr. 43537000)
- 8.1: Dummy plug and escutcheon cap (Order-nr. 37125000)
- 8.2: 把手 (Order-nr. 43734000)
- 8.2.1: 紧固件 (Order-nr. 4377000M)
- 8.3: Valve head (Order-nr. 43536000)
- 8.4: 膜 (Order-nr. 4375800M)
- 8.5: 螺帽 (Order-nr. 43735000)
- 8.6: Valve FLOAT, 5 pcs. (Order-nr. 4379100M)
- 8.7: 节流阀 (Order-nr. 42356000)
- 8.8: 密封配套 (Order-nr. 43722000)*
- 9: Support device (Order-nr. 43551000)
- 10: 软管 (Order-nr. 42233000)
- 10.1: Sealing washer (Order-nr. 0319100M)
- 11: 角阀 (Order-nr. 43821000)
- 12: 进水管 (Order-nr. 38338000)
- 13: 双重开关阀AV1 (Order-nr. 66558000)
- 13.1: Pneumatic hose (Order-nr. 42319000)
- 13.2: 紧固件 (Order-nr. 42310000)
- 13.3: Valve seat for GD2 (Order-nr. 42315000)
- 14: 配件, 1.13m (Order-nr. 3855800M)
- 15: AV1卸流阀 (Order-nr. 38796000)*
- 16: 防噪配套 (Order-nr. 37131000)*

* Optional accessories