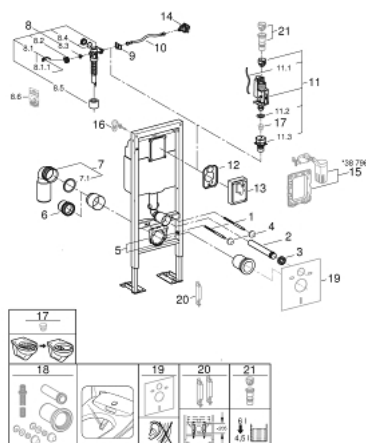


38 599 001 **RAPID SL**座厕元件，安装高度为1.13米，宽为0.42米



备件, 十一月 2021 – now

- 1: 螺栓 (Order-nr. 4276400M)
- 2: 嵌墙式出水接口 (Order-nr. 43352000)
- 3: 连接器 (Order-nr. 37119000)
- 4: Basin fastening (Order-nr. 43511SH0)
- 5: Support for outlet bend (Order-nr. 42243000)
- 6: 加长管 (Order-nr. 42766000)
- 7: PVC waste bend (Order-nr. 42216000)
- 7.1: Sealing washer (Order-nr. 4207700M)
- 8: 充水阀 (Order-nr. 43537000)
- 8.1: Dummy plug and escutcheon cap (Order-nr. 37125000)
- 8.2: 把手 (Order-nr. 43734000)
- 8.2.1: 紧固件 (Order-nr. 4377000M)
- 8.3: Valve head (Order-nr. 43536000)
- 8.4: 膜 (Order-nr. 4375800M)
- 8.5: 螺帽 (Order-nr. 43735000)
- 8.6: Valve FLOAT, 5 pcs. (Order-nr. 4379100M)
- 8.7: 节流阀 (Order-nr. 42356000)
- 8.8: 密封配套 (Order-nr. 43722000)*
- 9: Support device (Order-nr. 43551000)
- 10: 软管 (Order-nr. 43349000)
- 11: 双重开关阀AV1 (Order-nr. 66558000)
- 11.1: Pneumatic hose (Order-nr. 42319000)
- 11.2: 紧固件 (Order-nr. 42310000)
- 11.3: Valve seat for GD2 (Order-nr. 42315000)
- 12: 保护面板
(Order-nr. 43552000)
- 13: 保护盖 (Order-nr. 43944000)
- 14: Water Connection (Order-nr. 48561000)
- 15: AV1卸流阀 (Order-nr. 38796000)*
- 16: 配件, 1.13m (Order-nr. 3855800M)*
- 17: Flow restrictor (Order-nr. 42300000)*
- 18: Retrofit kit for shower toilets Sensia Arena and IGS (Order-nr. 40899000)*
- 19: 防噪配套 (Order-nr. 37131000)*
- 20: 配件 (Order-nr. 38779000)*
- 21: 4.5 l adapter for GD2 (Order-nr. 42333000)*