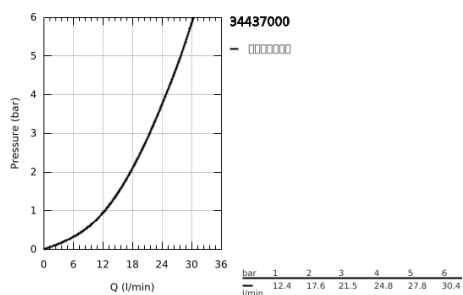
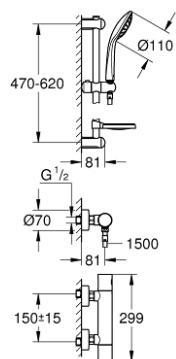


## 34 437 000 高特朗 1000 都市型 恒温淋浴混合龙头

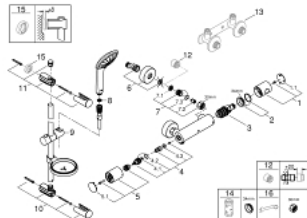


### 产品描述

- Colour: 镀铬
- 带花洒配套
- 包括:
- 高特朗1000 都市型 M 恒温淋浴龙头3/4" (34 430 000)
- 奥菲莉亚单式花洒组合 (27 256 001) 带高仪幻洒
- 推荐水压0.5至5巴
- 最大压差5:1
- 奥菲莉亚花洒组合 (27 256 001)



## 34 437 000 高特朗 1000 都市型 恒温淋浴混合龙头



备件, 二月 2016 – now

1: 把手 (Order-nr. 47882000)

1.1: Cover cap (Order-nr. 4788300M)

2: 碗盆龙头 (Order-nr. 47765000)

3: 恒温阀芯, 3/4" US (Order-nr. 47905000)

4: 阀芯 (Order-nr. 07146000)

4.1: Sealing washer Ø 6 x Ø 2 (Order-nr. 0128300M)

4.2: O型圈 Ø 18.2 x Ø 1.7 (Order-nr. 0392400M)

4.3: 紧固件 (Order-nr. 0529100M)

5: 止水阀把手 (Order-nr. 47884000)

5.1: Cover cap (Order-nr. 4788300M)

6: S弯 (Order-nr. 12662000)

7: 防回流阀 (Order-nr. 47189000)

7.1: 滤网 (Order-nr. 0726400M)

7.2: 防回流阀 (Order-nr. 08565000)

7.3: O型圈 Ø 17 x Ø 2 (Order-nr. 0305500M)

8: 滤网 (Order-nr. 0700200M)

9: 滑块 (Order-nr. 48099000)

10: 花洒杆托架 (Order-nr. 48098000)

11: 花洒杆托架 (Order-nr. 48100000)

12: 延长配件 3/4 (Order-nr. 0713000M)\*

13: Bracket for exposed installation (Order-nr. 18153000)\*

14: 套筒扳手 (Order-nr. 19332000)\*

15: 平衡板 (Order-nr. 48051000)\*

16: Special spanner (Order-nr. 19377000)\*

\* Optional accessories